



# SHOWERSTAR

## USER MANUAL



<https://touchgrid.com/>

Copyright 2025

TouchGrid Pty Ltd

Rev 9 19 Aug2025

# TABLE OF CONTENTS

<b>1 INTRODUCTION</b>	<b>4</b>
<b>2 FEATURES</b>	<b>5</b>
2.1 WHAT'S IN THE BOX	6
<b>3 INSTALLATION STEPS</b>	<b>7</b>
3.1 STEP 1: POWER ON	7
3.2 STEP 2: CHARGE THE SHOWERSTAR	7
3.3 STEP 3: ZIP TIES	8
3.4 STEP 4: MOUNTING	9
3.5 STEP 5: INSERT SHOWERSTAR INTO CRADLE	9
<b>3 POWERING ON/OFF</b>	<b>10</b>
4.1 STARTUP	10
<b>5 APP CONFIGURATION</b>	<b>11</b>
5.1 DOWNLOAD APP	11
5.2 OPEN APP AND PAIRING	11
5.3 HOME PAGE	14
5.4 VIEW PAIRED DEVICE	14
<b>6 APP CUSTOMISATION</b>	<b>15</b>
6.1 DEVICE DETAILS	15
6.1.1 EDIT DEVICE ALERTS	16
6.1.2 DEVICE SETTINGS	16
6.2 SHOWER LOG HISTORY	17
6.3 FORECAST	17
6.4 APP SETTINGS	18
6.5 SUPPORT	19
6.6 WARRANTY	20
<b>7 SPECIFICATIONS</b>	<b>21</b>
<b>8 LED INDICATION</b>	<b>22</b>
8.1 THEMES	22
8.2 OPERATION	22
<b>9 MEASURING FLOW RATE</b>	<b>23</b>
<b>10 FIRMWARE UPDATE</b>	<b>24</b>
<b>11 DEVICE PAIRING REMOVAL</b>	<b>25</b>
<b>12 SENSITIVITY</b>	<b>25</b>
<b>13 LEARN MODE</b>	<b>26</b>
<b>14 FACTORY RESET / REMOVE DEVICE</b>	<b>27</b>
<b>15 FIELD TRIAL MODE</b>	<b>29</b>
<b>16 MOISTURE SENSING LABEL</b>	<b>30</b>
<b>18 TROUBLESHOOTING</b>	<b>31</b>

<b>19 STATEMENTS</b>	<b>32</b>
19.1 FCC STATEMENT	32
19.2 CE DECLARATION	32

# 1 INTRODUCTION

Shortening your shower time not only conserves precious water but also the energy required to heat it.

ShowerStar features coloured LEDs to notify you at different stages of each shower, helping you change your behaviour to take shorter, more water- and energy-efficient showers.

ShowerStar provides visual feedback when:

1. Water flow detected
2. Timer started
3. Half-time
4. Full-time
5. Over-time

The USB rechargeable battery lasts 6-8 months before needing recharging<sup>1</sup>.

The Timer is configurable for up to 10 minutes, with a default shower time of four minutes.

The simple design enables installation with no technical expertise or contractors needed. Simply mount the ShowerStar using the included zip ties to any shower pipe or showerhead, and you're ready to save water and energy!

---


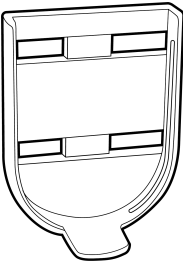
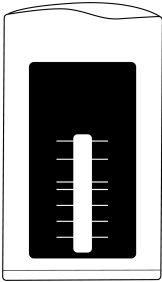
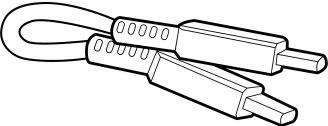
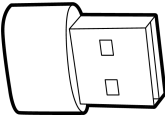
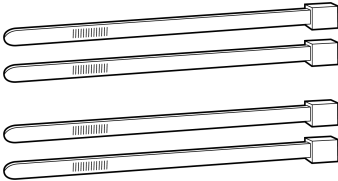
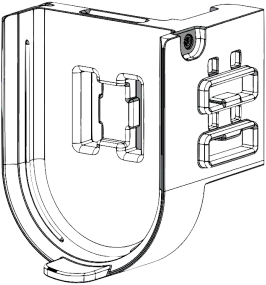
<sup>1</sup> Assuming 4 showers a day and default alert settings..



2 FEATURES



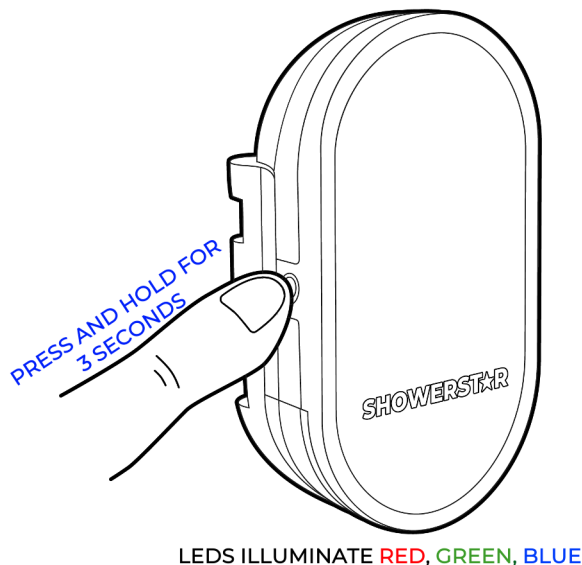
2.1 WHAT’S IN THE BOX

<p>1 x ShowerStar (1)</p> 	<p>1 x Standard cradle</p> 	<p>1 x Flow rate measuring bag</p> 
<p>1 x USB cable</p> 	<p>1 x USB adapter</p> 	<p>4 x Zip ties</p> 
<p>1 x Universal cradle</p>  <p>A universal cradle may be supplied, depending on your country and typical shower type.</p>		

### 3 INSTALLATION STEPS

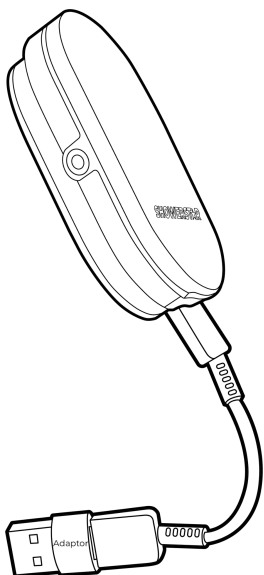
#### 3.1 STEP 1: POWER ON

Press and hold the operation button for 3 seconds to turn on the ShowerStar. The LEDs illuminate **RED**, **GREEN**, and **BLUE**.



#### 3.2 STEP 2: CHARGE THE SHOWERSTAR

When you first receive your ShowerStar, it must be charged for at least 4 to 6 hours before use. Connect the USB Type-C cable to the charging port on the ShowerStar, then connect the other end to any 5VDC phone or USB charger.



The RGB LED indicator will illuminate **RED** to indicate that the unit is charging.

Once fully charged, the RGB LED indicator will illuminate **GREEN**. You can then disconnect the USB Type-C charging cable and slide it back into the mounting cradle.

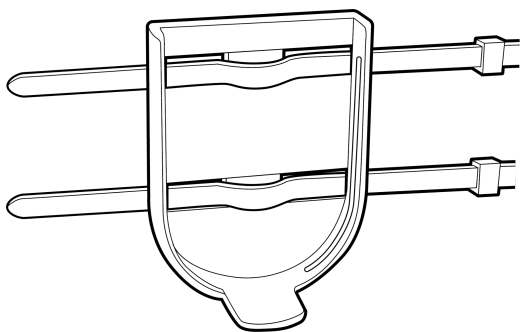
The battery will typically last six to eight months, depending on configuration and frequency of showers.

*\* A USB Type-A to Type-C adaptor is included.*

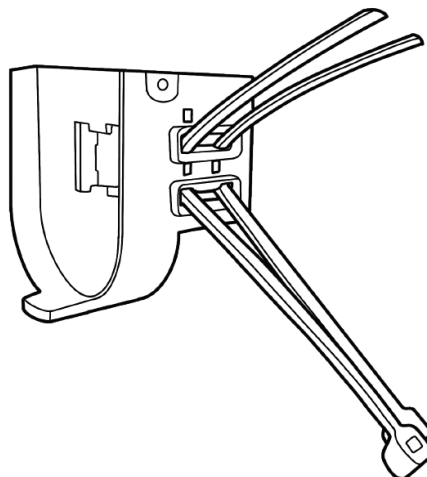
### 3.3 STEP 3: ZIP TIES

Insert a zip tie into the upper slot on the mounting cradle. Then, insert the second zip tie into the lower slot. The rounded end of the mounting cradle should point down, with the flat end facing up.

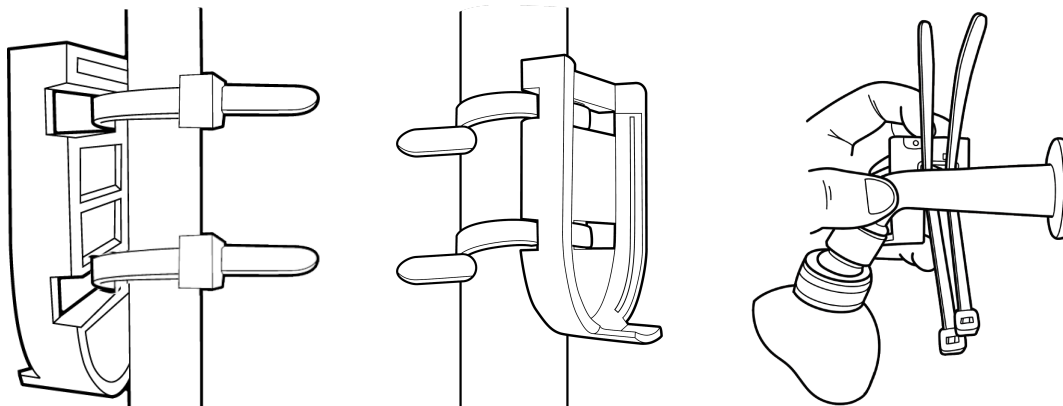
#### Standard Cradle



#### Universal Cradle



Wrap both zip ties around the pipe, then take the pointed end of each zip tie and insert it into the head of the zip tie, one at a time. Ratchet both zip ties tight to ensure the mounting cradle is properly fixed and does not slide along the shower pipes.

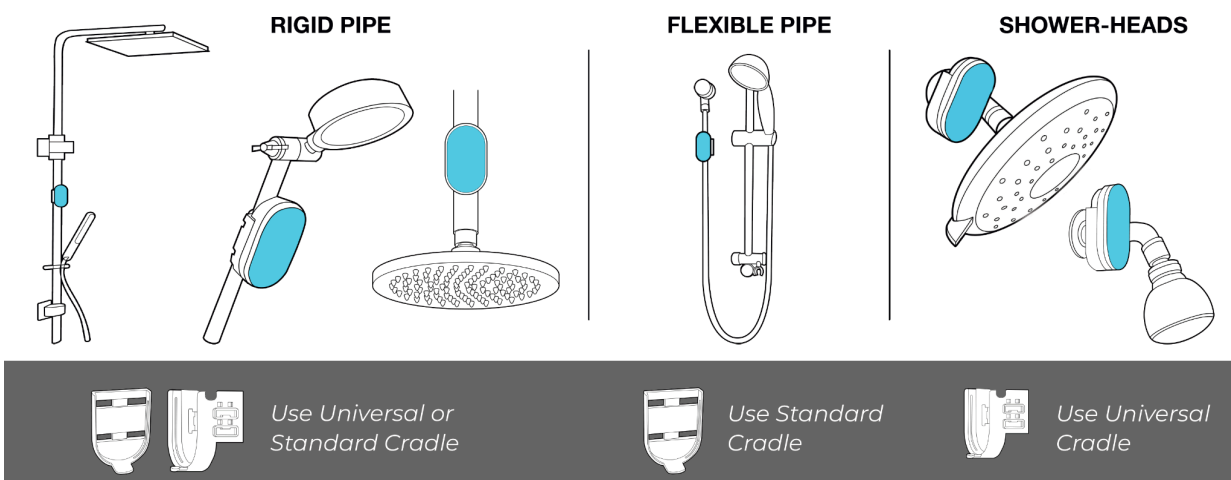


#### Note

- Mount ShowerStar™ 5 to 6ft / 1.5-1.8m above floor level.
- When installing ShowerStar™ onto the flexible pipe, avoid over-tightening to prevent compressing the pipe.
- Trim off the excess length of the zip ties.

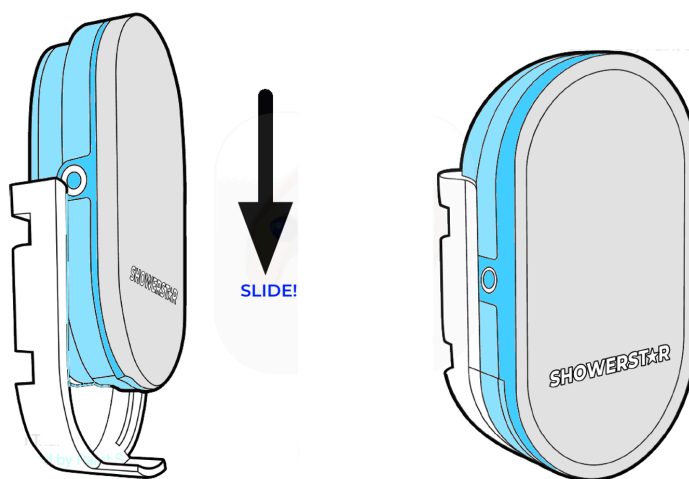
### 3.4 STEP 4: MOUNTING

Select the shower type and cradle.



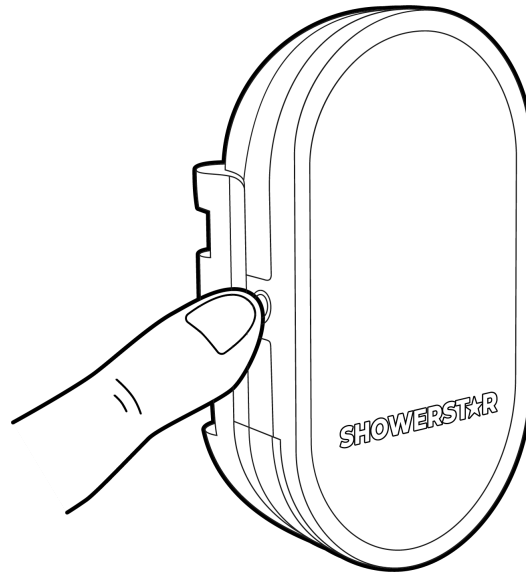
### 3.5 STEP 5: INSERT SHOWERSTAR INTO CRADLE

Slide the ShowerStar top down into the mounting cradle. The protruded tip of the mounting cradle should slide right into the grooves along the rounded end of the body, securing the unit. It must be **fully inserted** to protect the USB port from water.



### 3 POWERING ON/OFF

Press and hold the Operation Button for 4 seconds to power on. To power OFF, press and hold the Operation Button for 5 seconds. The red indicator illuminates and then extinguishes.



#### 4.1 STARTUP

Upon power-up, the RGB LED indicators illuminate: **RED**, **GREEN**, then **BLUE**, and the speaker **BEEPS**.



## 5 APP CONFIGURATION

### 5.1 DOWNLOAD APP

Download the “ShowerStar” App from the App Store or Google Play.



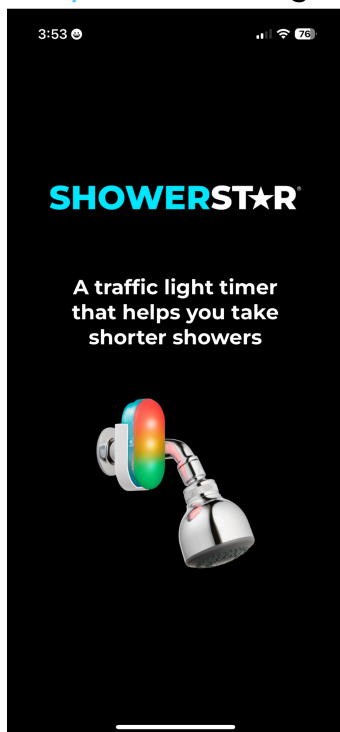
APP  
STORES

### 5.2 OPEN APP AND PAIRING

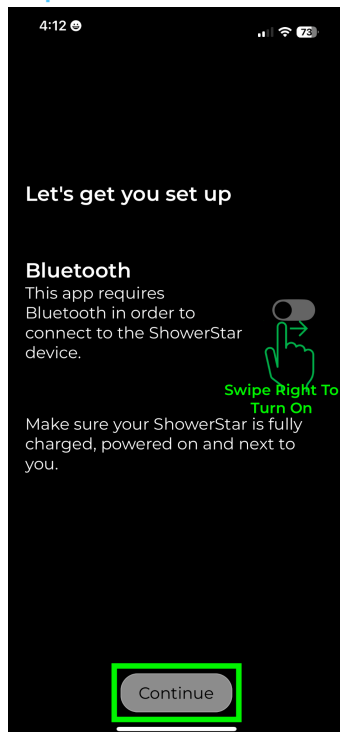
*\* Turn Bluetooth on in your mobile device settings.*

Open the “ShowerStar” App on your mobile device and follow the steps below.

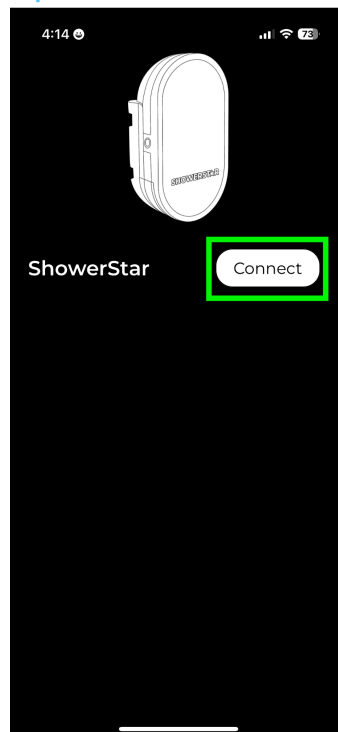
Step 1: Welcome Page



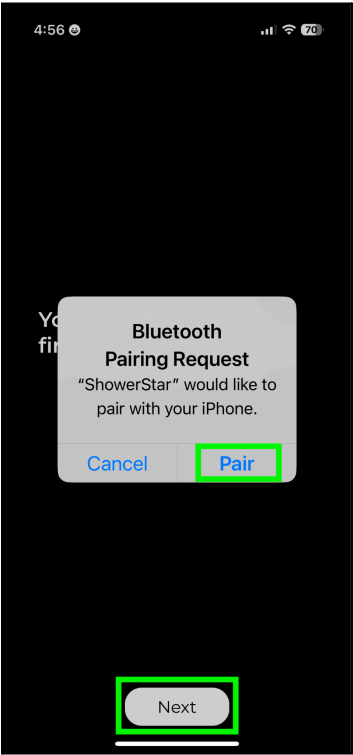
Step 2: Turn On Bluetooth



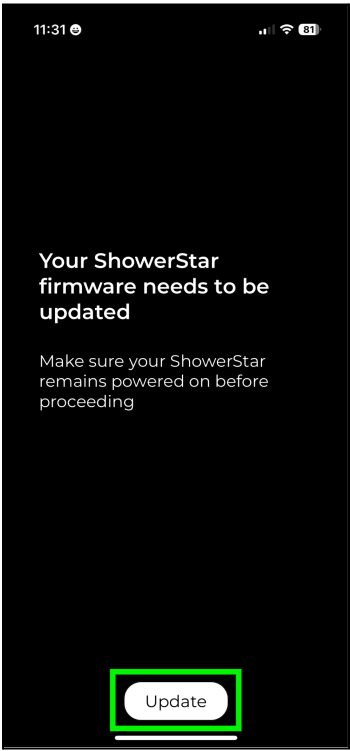
Step 3: Connect ShowerStar



Step 4: Pair The Device



Step 5: Update Firmware



You may be prompted to update the firmware on your ShowerStar

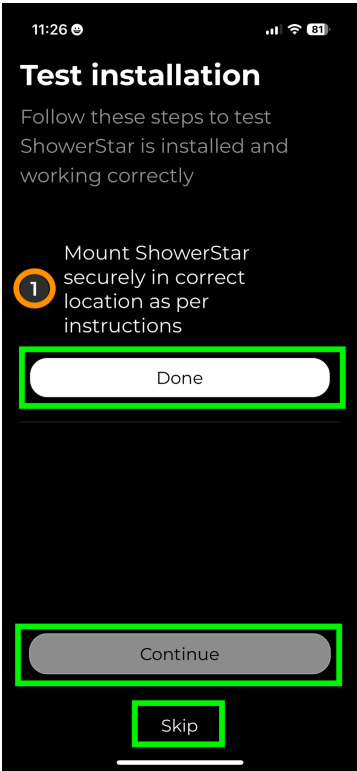
**Tap “Update”**

or

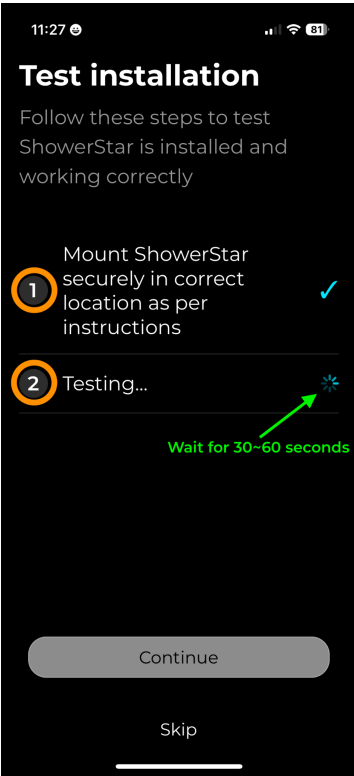
Prompted “Your ShowerStar firmware is up to date.”

**Tap “Next”**

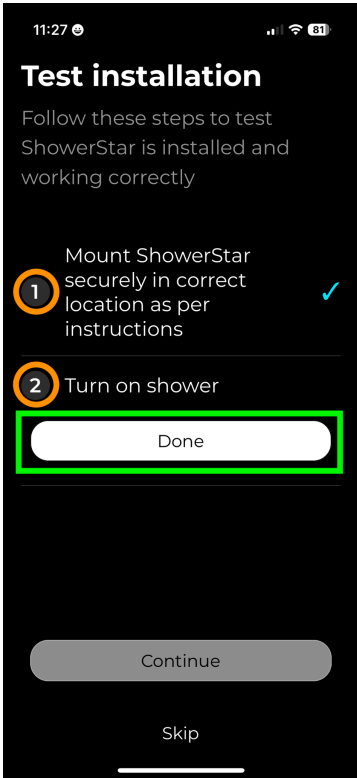
Step 6: Test Installation



Step 6a: Testing

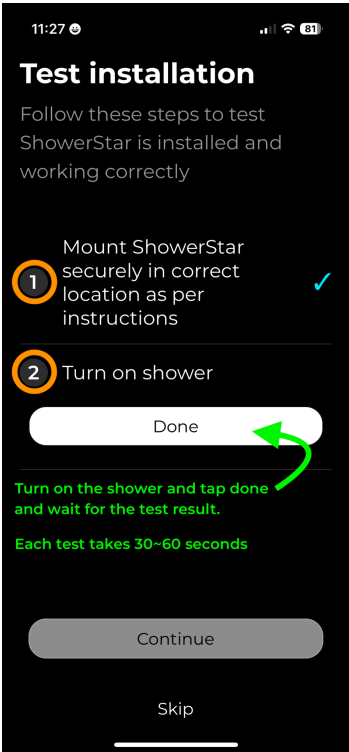


Step 6b: Turn on Shower

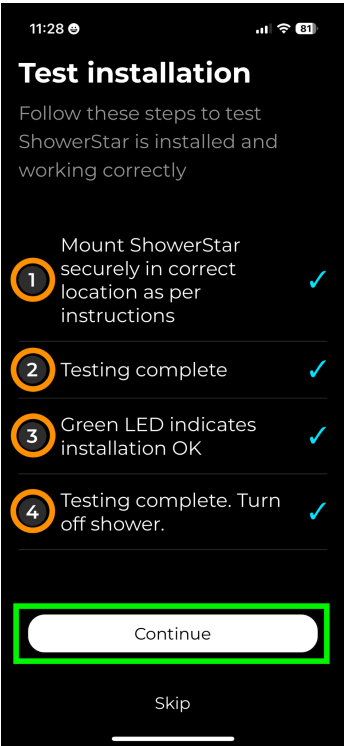




Step 6c: Wait for Test Result



Step 6d: Test Pass

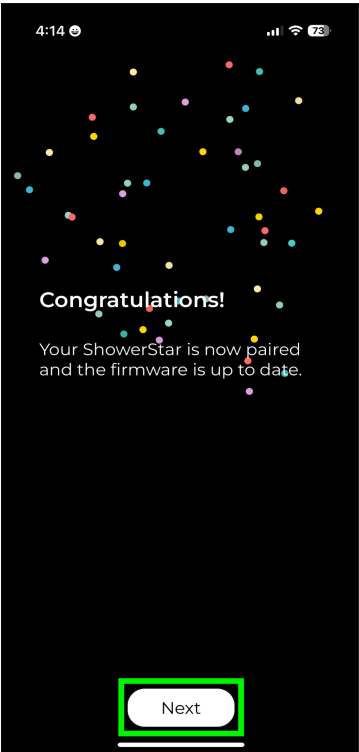


Step 6d: Test Fail

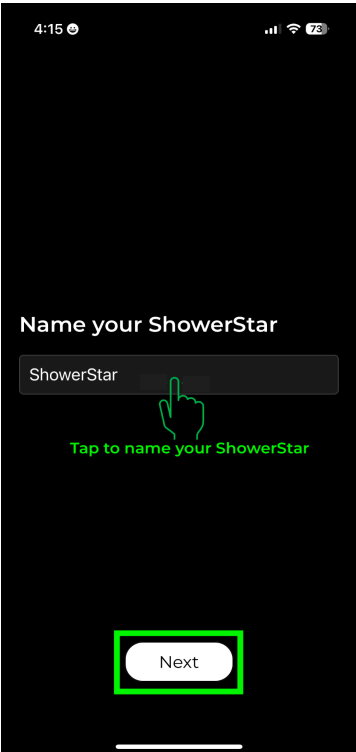
Testing failed. Review instructions, relocate ShowerStar securely and try again.

Refer to "Installation Steps" on pages 7, 8, and 9.

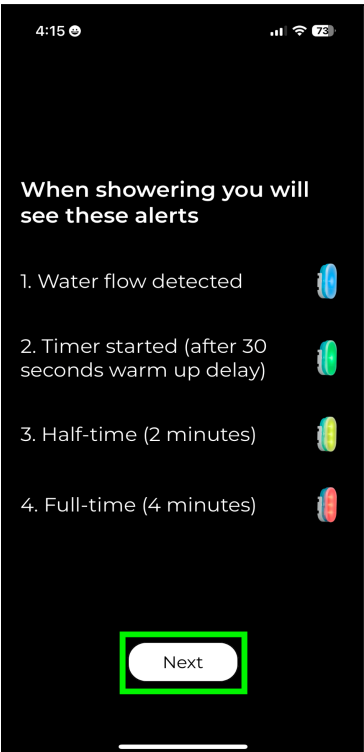
Step 7: Congratulations!



Step 8: Name Your Device



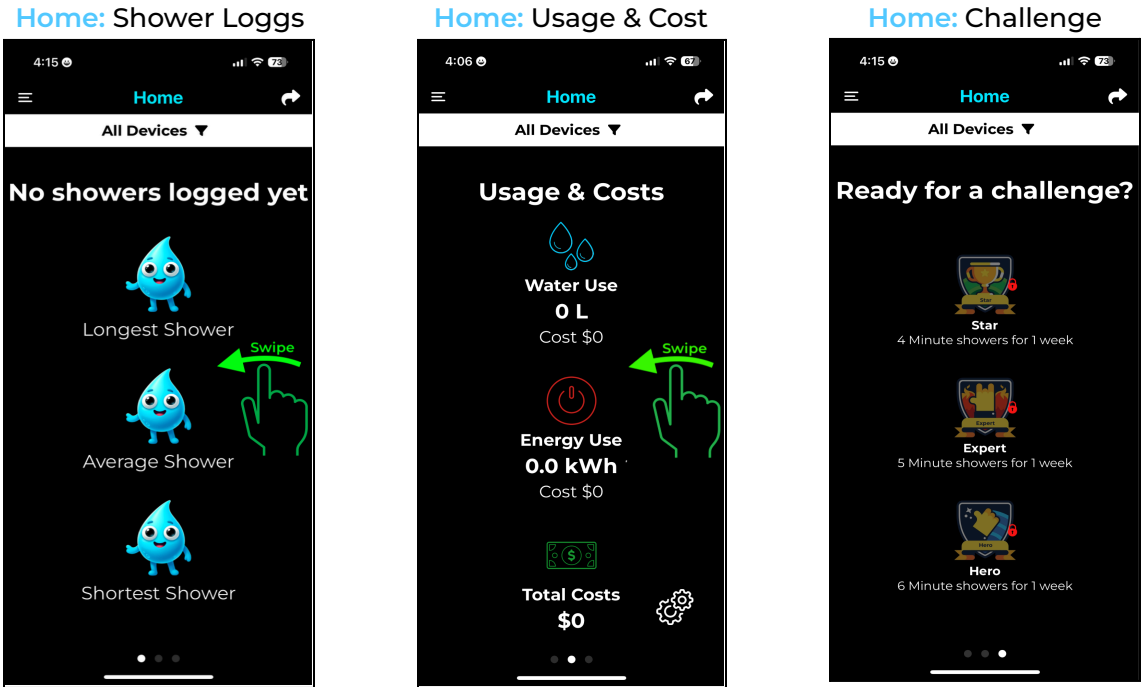
Step 9: Default Alerts



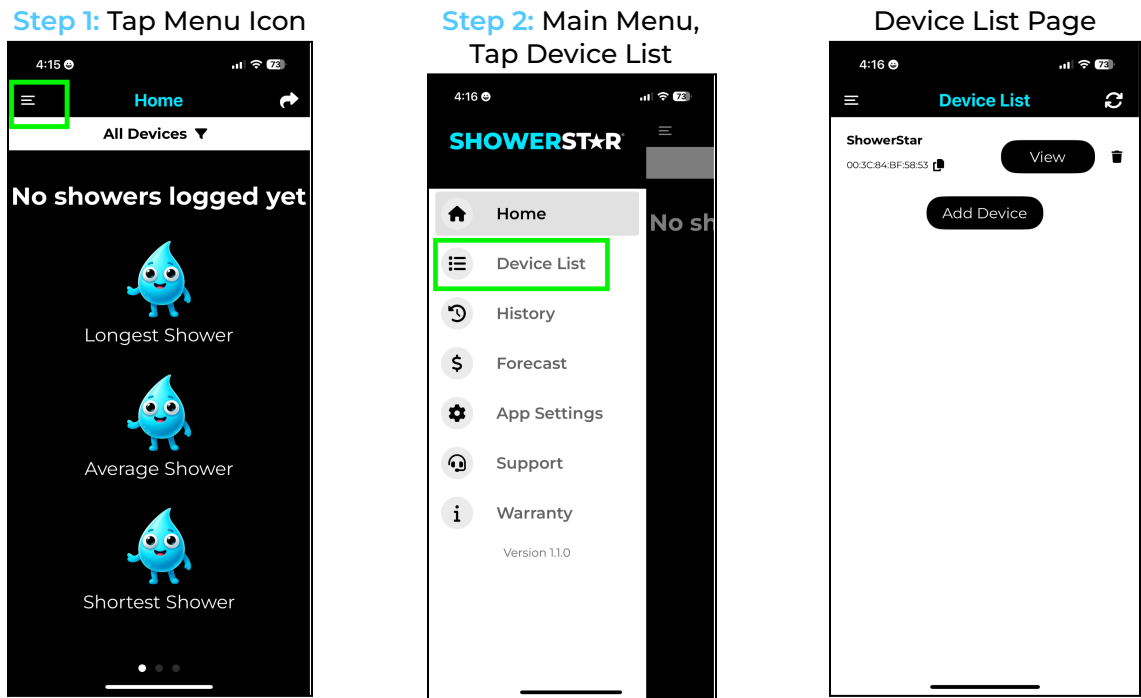
\* Bluetooth RF range indoors is typically ~16 ft / 5 meters.

5.3 HOME PAGE

Here, some of the key figures recorded by ShowerStar, such as the longest, average, and shortest shower times, as well as the units of water and energy total usage, and the cost.



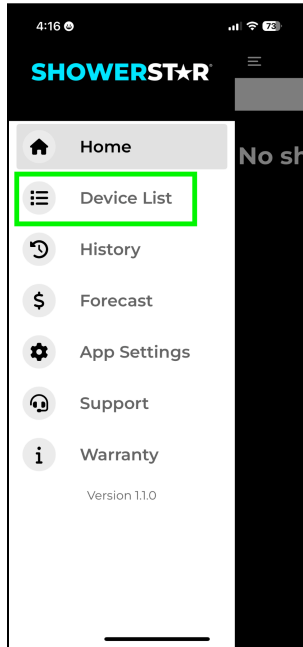
5.4 VIEW PAIRED DEVICE



## 6 APP CUSTOMISATION

The App allows customisation of timer and alert settings, firmware updates, and entering of water and energy data for savings calculation.

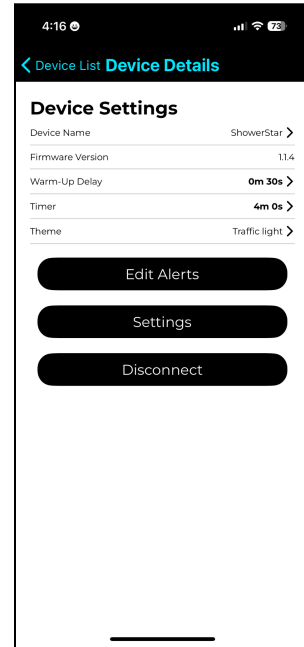
Step 1: Tap Device List



Step 2: Tap View



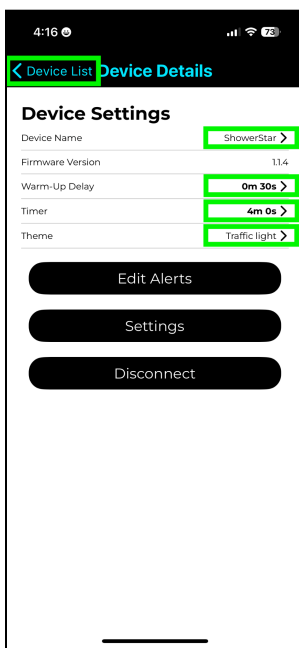
Device Settings Page



### 6.1 DEVICE DETAILS

The App allows customisation of timer and alert settings, and firmware updates.

Device Details



Using the App settings can be edited:

- Device Name.
- WarmUp Delay (0-2 mins).
- Timer (0-10 mins).
- Theme (Simple, Traffic Light, and Flashy).

To return to the previous page, tap the "Device List" option.

**\*Make sure you save the changes.**

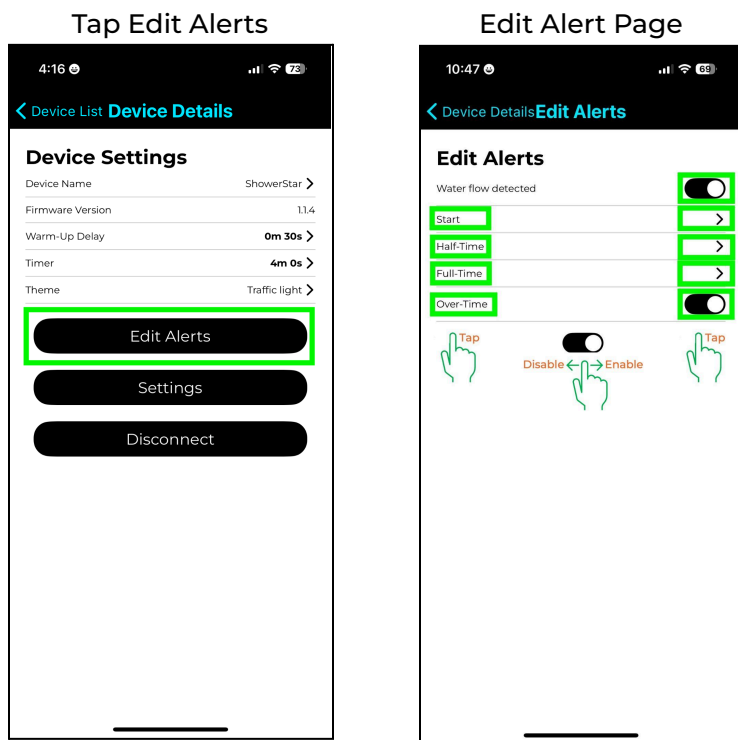
#### Disconnect:

To terminate the connection to the ShowerStar device, simply tap on Disconnect.

**Note**, doing so does not remove the paired connection to the ShowerStar device. It simply terminates the Bluetooth connection to the device.

**\*Refer to page 24, section 11.**

## 6.1.1 EDIT DEVICE ALERTS



Using the App these alerts can be edited:

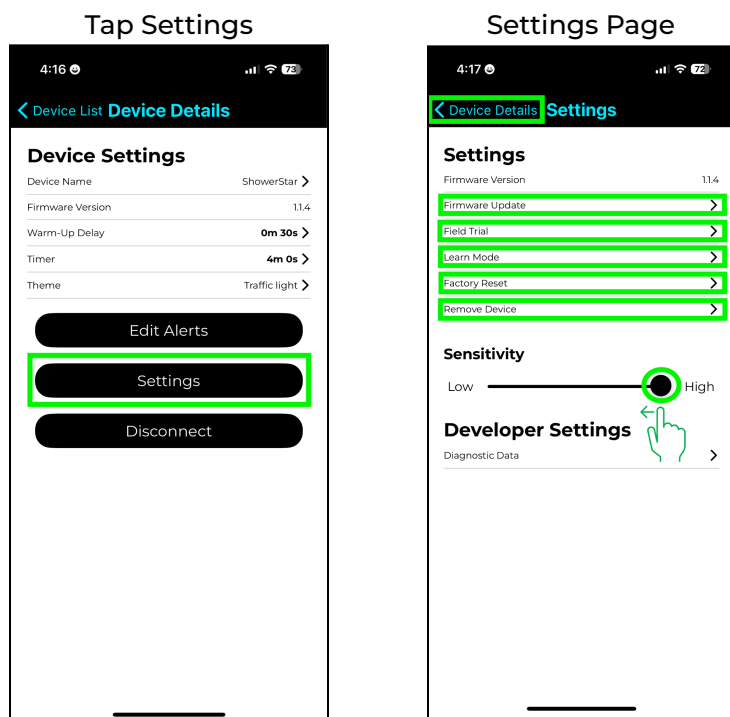
- Water Flow Detection LED (enable/disable)
- Start LED and Sound alerts (enable/disable)
- Half-time LED and Sound alerts (enable/disable)
- Full-time alerts (Sound/brightness/duration)
- Over-time alerts (enable/disable/brightness/duration/frequency)

**\*Tap the green boxes to edit the above settings.**

*\*Make sure you save the changes.*

To return to the previous page, tap the "Device List" option.

## 6.1.2 DEVICE SETTINGS



Using the App, these settings can be edited:

- Update firmware
- Field trial mode (enable/disable/settings)
- Learn mode (recalibrates the accelerometer to detect when the shower is flowing)
- Factory reset
- Remove device
- Adjust sensitivity manually (Low ⇌ High)

**\*Tap the green boxes to set the above settings.**

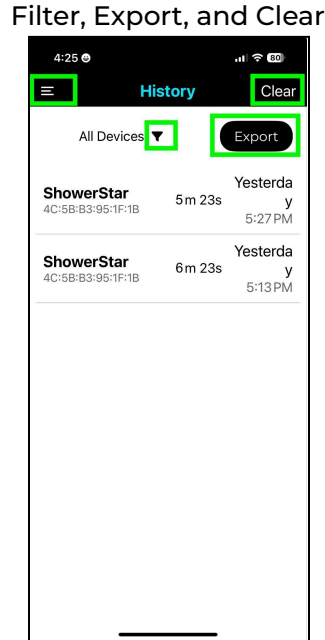
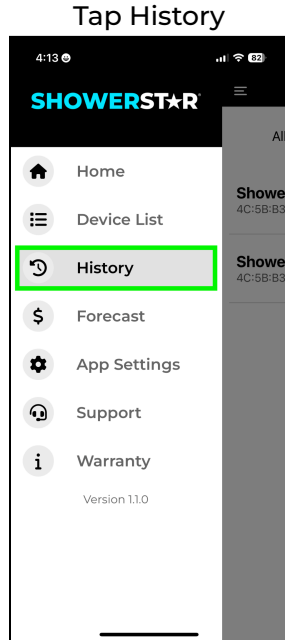
*\*Make sure save the changes.*

To return to the previous page, tap the "Device List" option.

Using the App, the settings can be edited

## 6.2 SHOWER LOG HISTORY

The History page will be shown, containing a log of all the showers recorded by the ShowerStar device.



### Note:

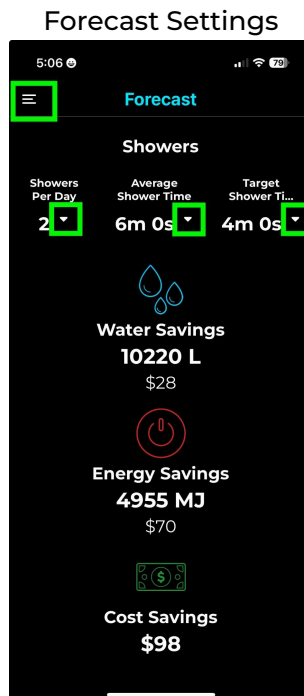
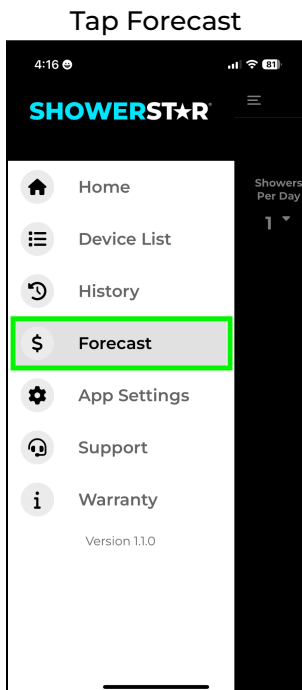
The History page shows all devices by their names and the respective Device IDs, so you can differentiate the shower logs recorded from different devices.

- Filter By device(s).**  
(select the device that need to be filter)
- Export** Export data
- Clear** Erase all recorded shower logs
- Back to main menu**

- The EXPORT button allows you to export all shower logs to a CSV file and share the log.
- Tap CLEAR to confirm that you want to clear all logs.

## 6.3 FORECAST

The Forecast page will then be shown, indicating some annual savings figures.



The calculation works by getting the time difference between the Average Shower Time and the Target Shower Time implemented by the ShowerStar device.

The time difference is then multiplied by the number of showers per day and the water flow rate to obtain the units of water saved per day. This is then multiplied by 365 to obtain the units of water saved per year. Multiply this with the water cost, and the cost of water savings can be obtained.

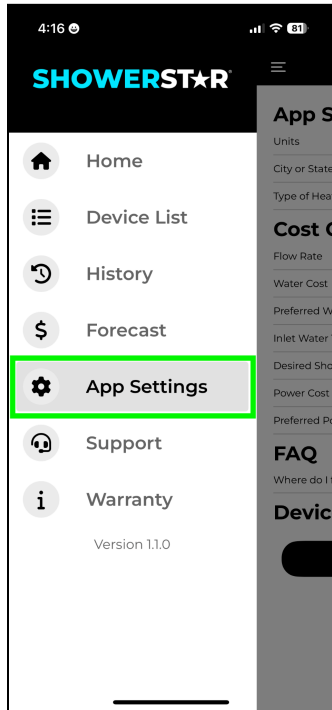
- Key in shower per day / select average and target shower time
- Back to main menu

\*Make sure you save the changes.

## 6.4 APP SETTINGS

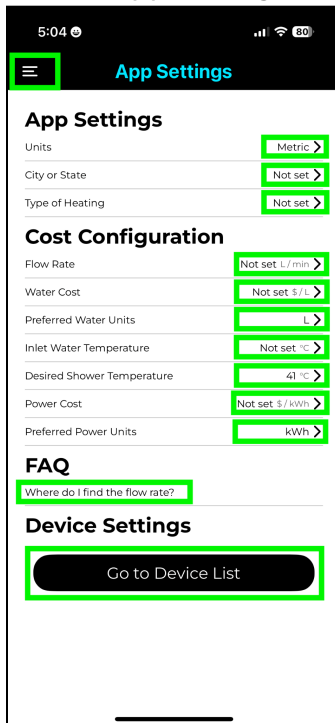
Here, you may reconfigure the settings that you first set up in the Let's get started page.

Tap App Settings



The App requires some information from you to calculate the usage and savings of your water and energy resources.

Set App Settings



### App Settings:

- Units > Select metric / imperial
- City > Select the listed city or other
- Type of Heating > Select the type of water heating system
  - Gas storage, Gas instantaneous, Electric storage, Electric heat pump, Gas Boiler Central, Solar Gas Storage, Solar Gas instantaneous, Solar Electric Resistance.

### Cost Configuration:

- Flow Rate > Enter the Flow Rate measured on your shower system.  
Select FAQ, "Where do I find the flow rate?" for more information on measuring the water flow rate of your shower system.  
[or Refer to Section 8.3, Page 23: Measuring Water Flow].

\*Water Cost > The cost of one unit of water.

\*Inlet Water Temperature > The water temperature at the inlet pipe.

Desired Shower Temperature > Shower water temperature

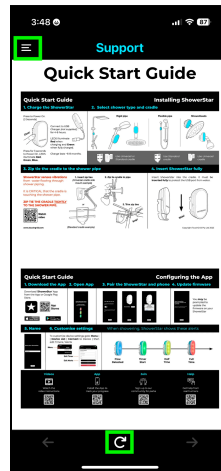
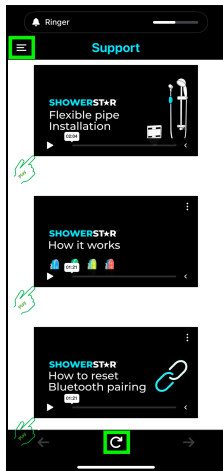
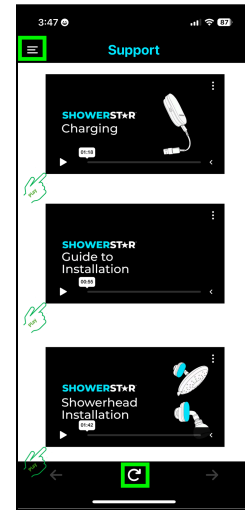
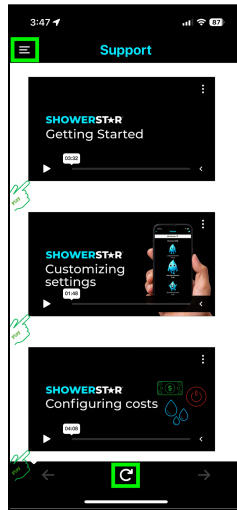
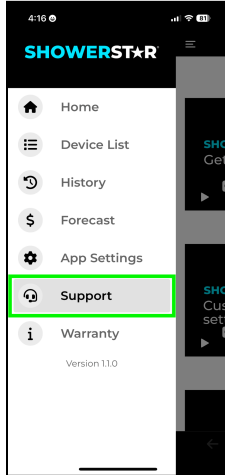
\*Power Cost > The cost of one unit of power.

\* Automatically populate once you have selected the City and Type of Heating fields.

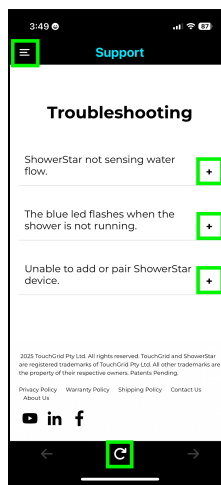
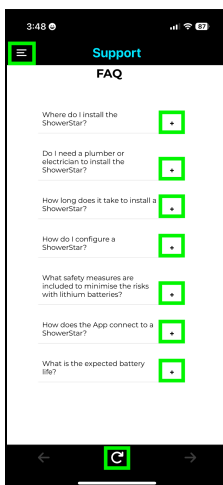
## 6.5 SUPPORT

Tap the Support tab in the side menu to access documentation and frequently asked questions for the ShowerStar device.

### Tap Support



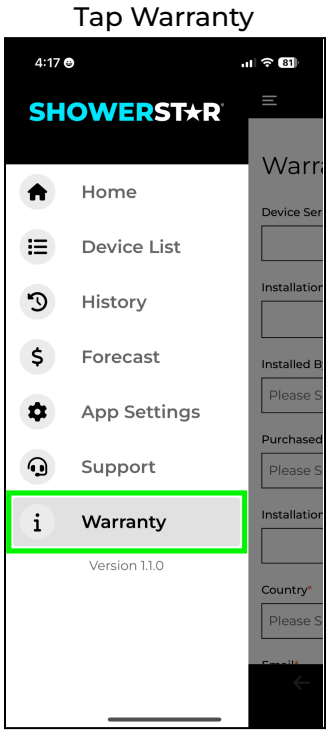
Tap on the PLAY icon “▶” to play the short video.



Tap on the Expand icon “+” next to the question to expand the explanation section.

6.6 WARRANTY

To activate your warranty, tap on the Warranty tab in the App and fill up the Warranty Registration form. You may refer to the following table to help fill out the form:

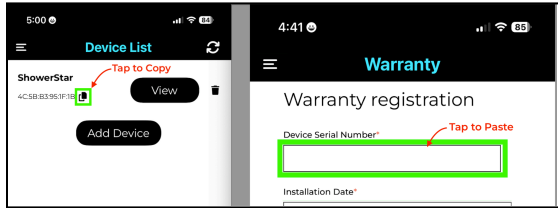


Device ID:

Device serial number copy and paste

Step 1: Tap to copy from the Device List page

Step 2: Paste the serial number into the Warranty Registration page or key in the serial number.



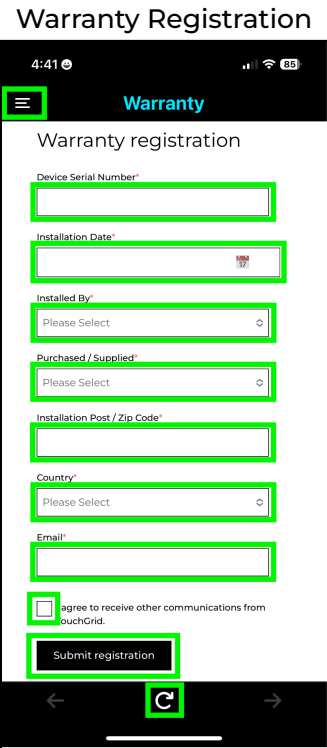
Installation Date:

Select the date of installation for the device. The warranty will cover a 1-year period from the installation date.

Installed By:

Specify the party that installed the device. Options:

- Self Install
- Plumber
- Energy Contractor
- Other



Purchased / Supplied:

Specify the purchaser of the device. Options:

- Self Purchase
- Supplied by a water utility
- Supplied by an energy utility
- Other

Installation Post / Zip Code:

Enter the zip code of your address.

Country:

Enter your country of residence.

Email:

Enter your email address.

Tick:

☐ I agree to receive other communications from TouchGrid.

Submit Registration:

Submit Registration



7 SPECIFICATIONS

SHOWERSTAR®

Specifications

Features



Warranty

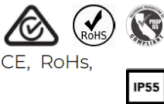
1-year limited warranty

Approvals

FCC (US) Part 15.247  
CE - EMC (EN IEC61326)  
RED ETSI EN 310 489-1, EN 301 489-17,  
ETSI EN 300 328, EN IEC 62311:



RCM, RoHS, Prop65



Battery (UL1642, UL2054, IEC62133, CB, CE, RoHS, UN38.3, REACH)

For indoor use only. Water resistant.  
Do not immerse fully in water.

Ordering

TG168 ShowerStar Shower Sensor Timer

Legal

© 2025 TouchGrid Pty Ltd. All rights reserved.  
Designed in Australia.

© 2024 TouchGrid Pty Ltd. All rights reserved.  
TouchGrid and ShowerStar are registered trademarks  
of TouchGrid Pty Ltd. All other trademarks are the  
property of their respective owners. Patents Pending.

Electrical

FOR INDOOR USE ONLY

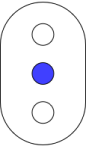
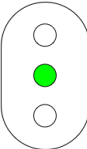
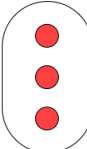
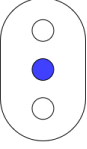
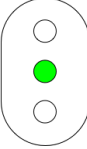
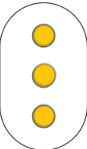
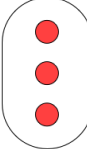
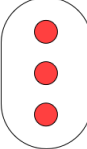
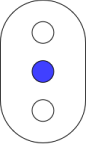
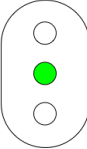
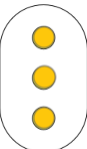
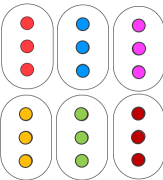
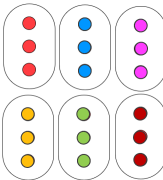
Battery	1000mAh 3.7V Lipo Recharge every ~6-8 months* *Assumes 4 showers / day and subject to alert configuration
Charging	5VDC USB Charger
Communications	Bluetooth Low Energy™
App OS Support	iOS™ + Android™
Estimated Product Life	8-10 years

Physical

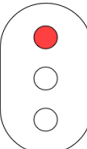
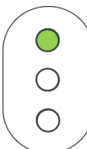
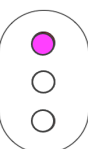
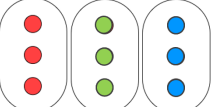
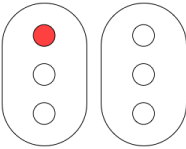
Operating Temp	32° to 113° F   0° to 45° C
Storage Temp	14° to 140° F   -10° to 60° C
IP Rating	55
L x W x H	3.27" x 1.8" x 0.9"
	83mm x 45mm x 23mm
Weight	2.3 ounces   65 grams

# 8 LED INDICATION

## 8.1 THEMES


Theme	Water Flow	Timer Start	Half Time (Optional)	Full-Time	Over-Time (Optional)
Simple					
Traffic Light					
Flashy					

## 8.2 OPERATION

Charging	Fully Charged	Low Battery	Power On	Power Off
				

## 9 MEASURING FLOW RATE

5:21 ☺  
📶 84

A black and white line drawing of a person with glasses and spiky hair, smiling while holding a shower flow measurement bag under a shower head. Water is spraying from the shower head onto the bag. The bag has a scale on it.

**Step 1: Turn on the shower head**  
Turn on the shower head to be tested and adjust the flow to how you normally use it.

**Step 2: Hold the SHOWER FLOW MEASUREMENT BAG**  
Hold the SHOWER FLOW MEASUREMENT BAG supplied with the product open and place it under the fixture for exactly FIVE (5) seconds. Make sure to capture all of the water coming out of the shower head.

▼

**Step 3: Remove the bag from the flow**  
Remove the bag from the flow. Holding the bag open, raise to eye level and read the flow rate measurement. Repeat to check the result. Input the flow rate value to the TouchGrid ShowerStar App.

**Tip:**  
If your showerhead is too wide for this flow rate bag, use the same procedure but collect the water in a bucket and afterwards pour the collected water into the measurement bag to determine the flow rate.

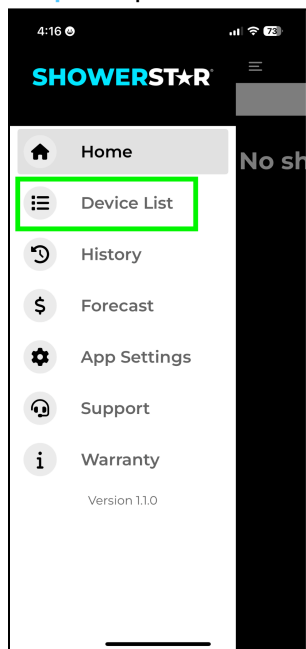
I Understand

—

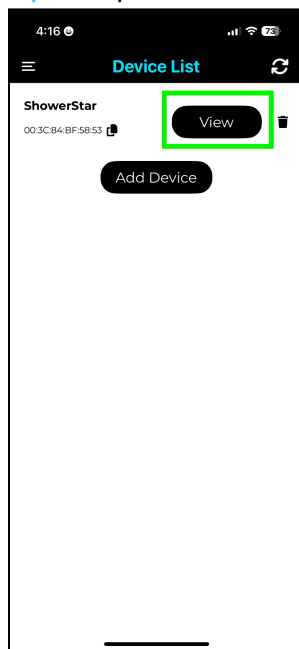
## 10 FIRMWARE UPDATE

Firmware will be updated during the initial pairing and onboarding process. However, it can also be updated after the initial pairing and onboarding process.

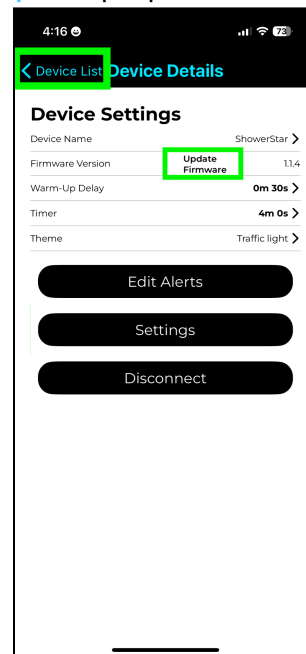
Step 1: Tap Device List



Step 2: Tap View/Connect

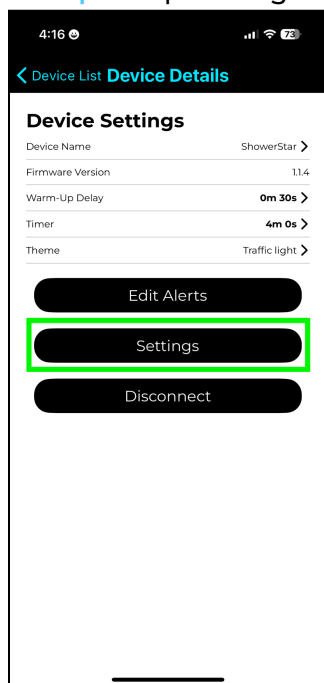


Step 3: Tap Update Firmware

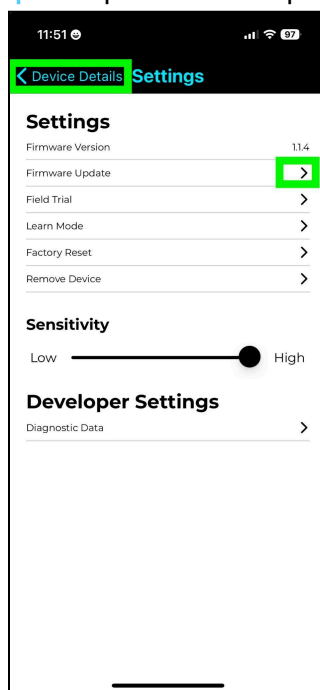


Firmware can also be updated on the Settings Page.

Step 3: Tap Settings



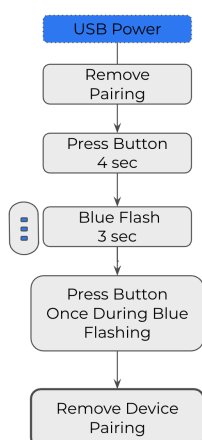
Step 4: Tap Firmware Update



ONCE COMPLETE, THE APP WILL RETURN TO THE DEVICE DETAIL APP PAGE

## 11 DEVICE PAIRING REMOVAL

Remove device pairing from your mobile. This will enable it to connect with a new mobile device.



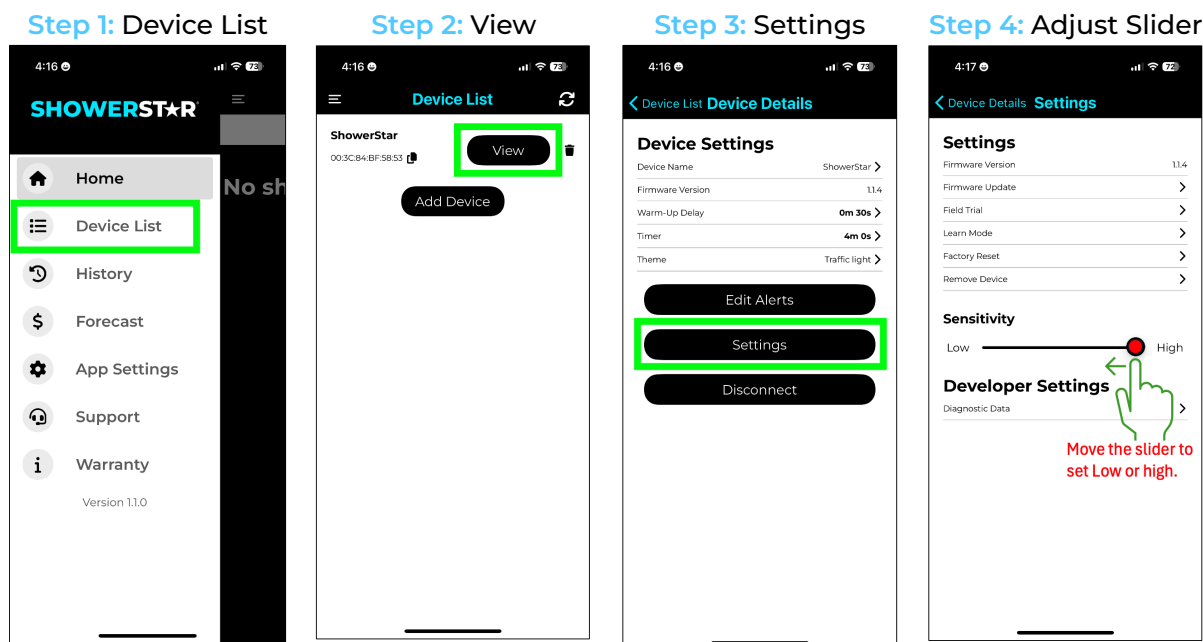
### Steps:

1. Turn On the Device.
  2. Connect the device to the phone charger.
  3. Turn On the power for the charger.
  4. Red / Green will be flashing.
  5. Press the device button for 4 seconds.
  6. Blue will be flashing.
  7. Quickly press the device button once during the blue flashing.
  8. The blue flashing will stop.
  9. The device that was paired with your phone was removed.
- The device is now enabled to connect with a new mobile device.**

\*You may also remove the connection from your phone settings.

## 12 SENSITIVITY

There is also a 15-step sensitivity slider that controls how sensitive the ShowerStar device is at detecting the start of your showers. As this setting varies for different showers, you may need to experiment with the sensitivity setting to tune it accurately to your specific shower.



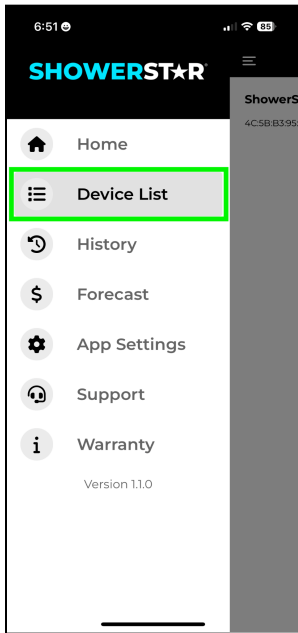
\* Set the sensitivity lower if the device is falsely triggering (blue flashing if no water is running).

## 13 LEARN MODE

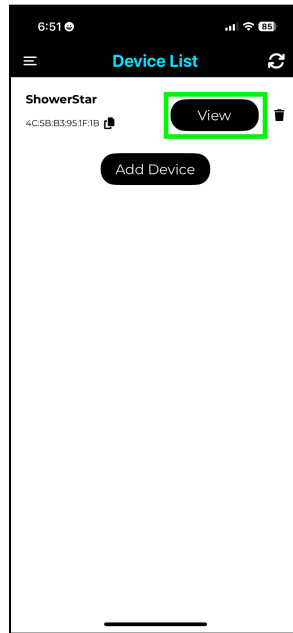
Tap on Learn Mode to enable your ShowerStar to calibrate its sensor to detect the start of your showers accurately.

The Start Calibration window will then be shown. Slide the ShowerStar device to its mounting cradle, run your shower, and tap on START.

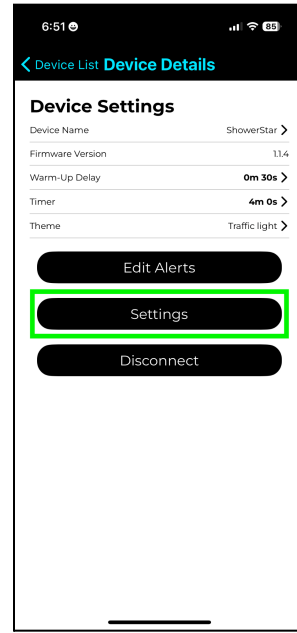
Step 1: Tap Device List



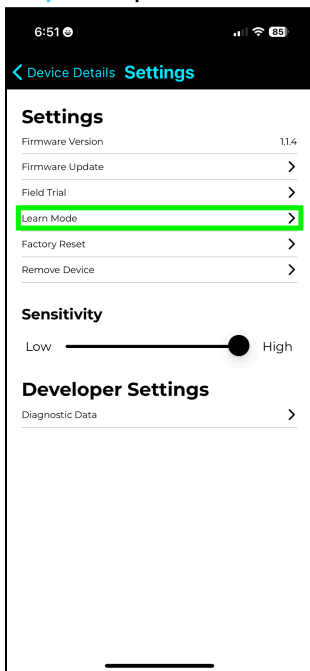
Step 2: Tap View/Connect



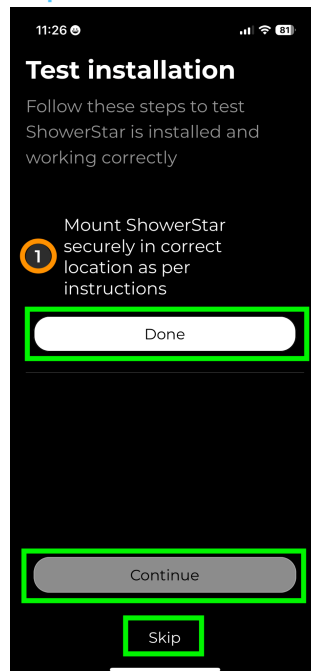
Step 3: Tap Settings



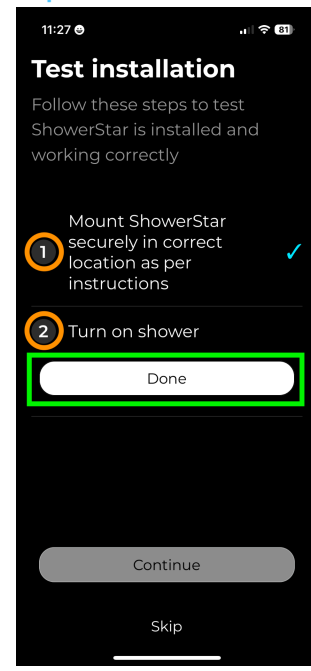
Step 4: Tap Learn Mode

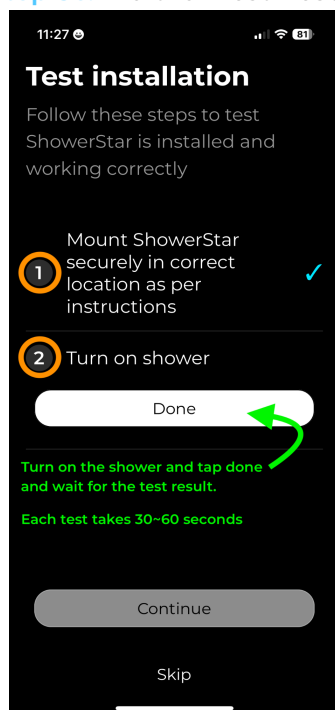
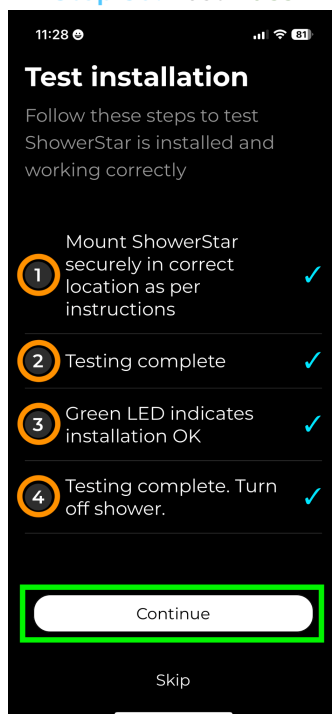
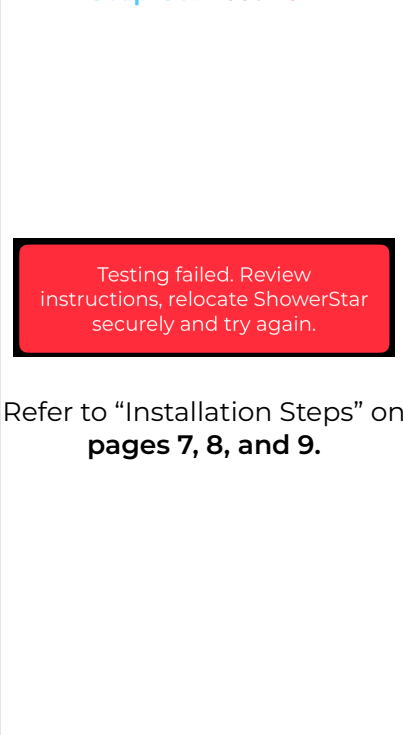


Step 5a: Test Installation

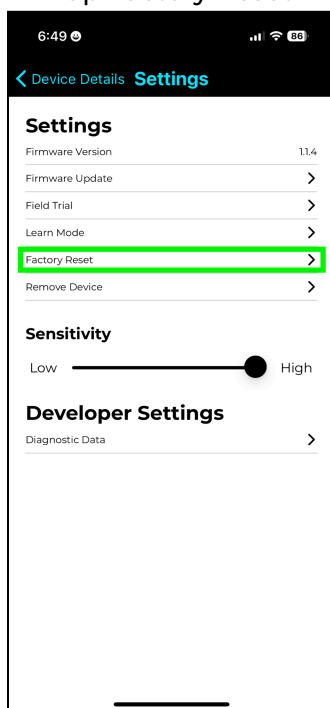


Step 5b: Turn on Shower



**Step 5c: Wait for Test Result****Step 5d: Test Pass****Step 6d: Test Fail**

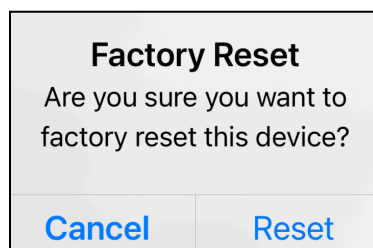
## 14 FACTORY RESET / REMOVE DEVICE

**Tap Factory Reset**

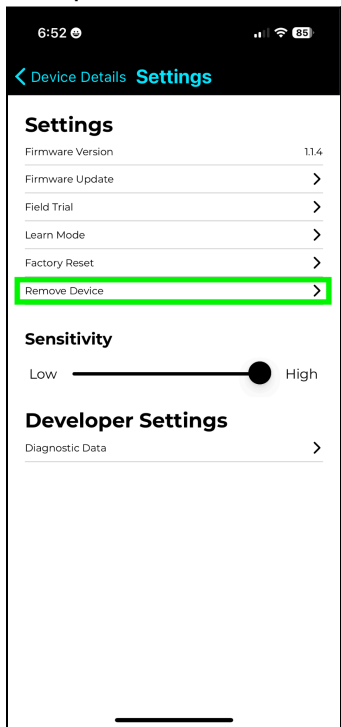
To reset the ShowerStar device to its factory default settings, tap on Factory Reset.

The Factory Reset window will then be displayed, requesting confirmation that you wish to reset to the factory default settings.

Tap on RESET to continue.



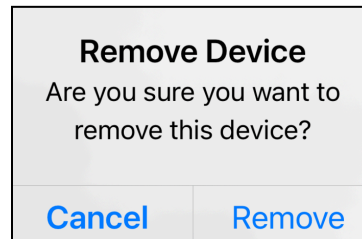
### Tap Remove Device



To remove the paired connection between the ShowerStar device to your mobile device, tap on Remove Device.

The following "Remove Device" window will be displayed.

Tap on REMOVE to confirm removing the paired connection to the ShowerStar device.

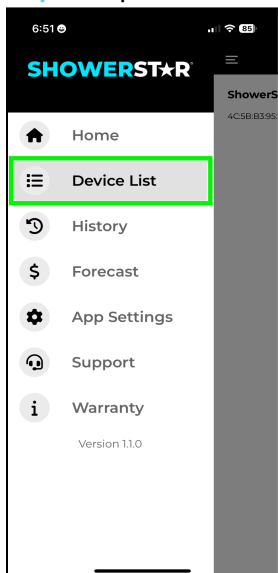




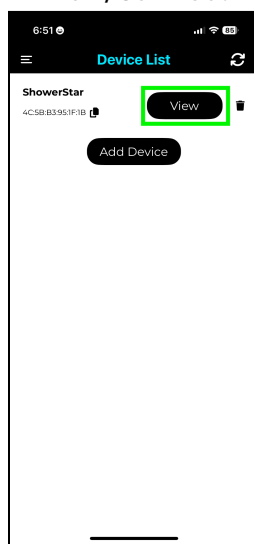
## 15 FIELD TRIAL MODE

The Field Trial Mode is a special operating mode designed to assist utility companies in determining the effectiveness of the ShowerStar device. Tap on the toggle to enable or disable the device's Field Trial Mode.

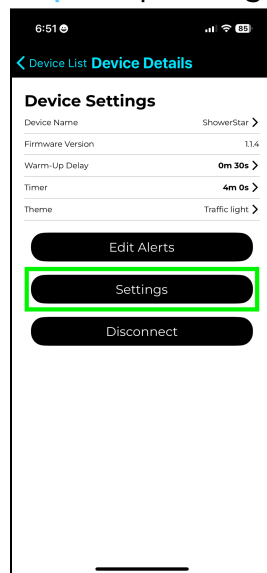
**Step 1: Tap Device List**



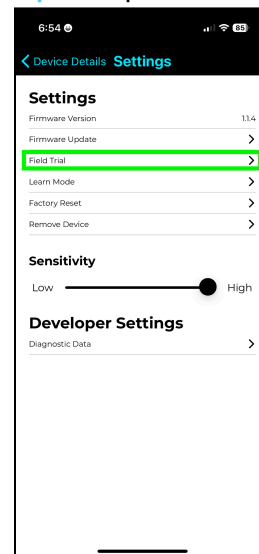
**Step 2: Tap View/Connect**



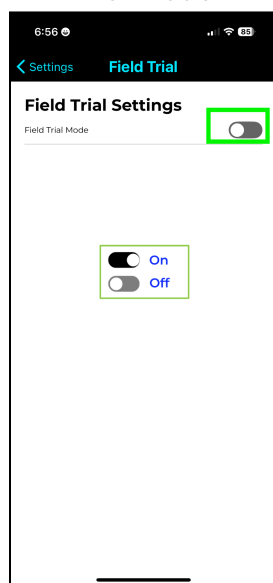
**Step 3: Tap Settings**



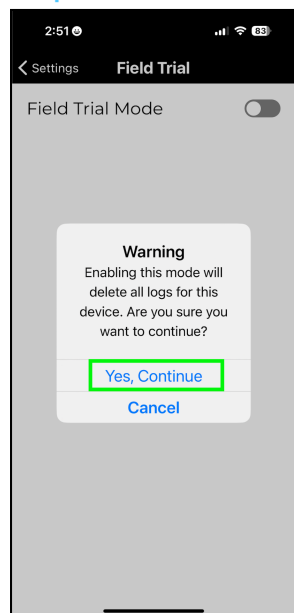
**Step 4: Tap Field Trial**



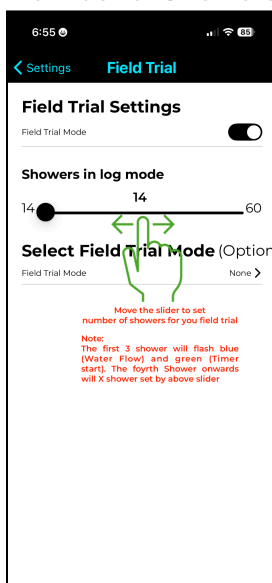
**Step 4: Turn On Field Trial Mode**



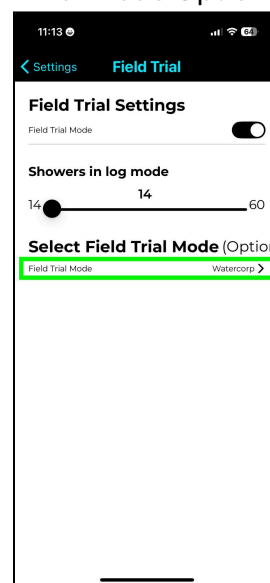
**Step 5: Confirmation**



**Step 6a: Set the Number of Showers**

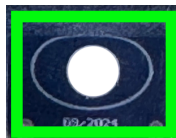


**Step 6b: Tap for Field Trial Mode Option**

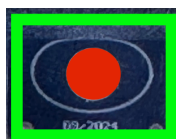


## 16 MOISTURE SENSING LABEL

The label will change color (from white to red) if it comes into contact with moisture.

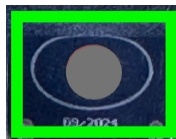


White Color- No moisture



Red/Grey Color - Moisture detected.

Remove the device from the holder and turn it off.



\*Discard, photograph the back of the device, and dispose of it in e-waste bins.

**THE DEVICE IS FOR  
INDOOR USE ONLY.**

**WATER RESISTANT ONLY,  
DO NOT IMMERSE FULLY  
IN WATER.**

## 18 TROUBLESHOOTING

- 10.1 False timer starts / Blue flashing, but no water is running.  
Adjust the sensitivity from high to low and monitor again.  
Refer to page 24, section 12
- 10.2 Flushing toilet / Turn On tap water, Blue is flashing  
Adjust the sensitivity from high to low and monitor again.  
Refer to page 24, section 12
- 10.3 Cannot connect to my phone after forgetting the device on my mobile phone.  
Remove the pairing on your device.  
Refer to page 24, section 11.
- 10.4 My Phone charger has a USB Type-A port.  
Use a Type A to Type C adapter, included as an accessory.  
Refer to page 6, section 2.1.
- 10.5 Cannot detect water flow / no blue or green flashing.  
Check the device's installation on the shower pipe.  
Refer to pages 8 and 9.
- 10.6 Not sure how to install and set up the device  
Refer to the App Support page, Page 18.  
Refer to <https://touchgrid.com/support>.

## 19 STATEMENTS

### 19.1 FCC STATEMENT

This device complies with part 15 of the FCC Rules. Operation is subject to the following two conditions: (1) This device may not cause harmful interference, and (2) this device must accept any interference received, including interference that may cause undesired operation.

**NOTE:** This equipment has been tested and found to comply with the limits for a Class B digital device, pursuant to Part 15 of the FCC Rules. These limits are designed to provide reasonable protection against harmful interference in a residential installation. This equipment generates uses and can radiate radio frequency energy and, if not installed and used in accordance with the instructions, may cause harmful interference to radio communications. However, there is no guarantee that interference will not occur in a particular installation. If this equipment does cause harmful interference to radio or television reception, which can be determined by turning the equipment off and on, the user is encouraged to try to correct the interference by one of the following measures:

- Reorient or relocate the receiving antenna.
- Increase the separation between the equipment and the receiver.
- Connect the equipment to an outlet on a circuit different from that to which the receiver is connected.
- Consult the dealer or an experienced radio/TV technician for help.

**Important:** Changes or modifications not expressly approved by the party responsible for compliance could void the user's authority to operate the equipment.

**FCC Radiation Exposure Statement:** In order to comply with RED RF Exposure requirements, this device must be installed to provide at least 20 cm separation from the human body at all times.

### 19.2 CE DECLARATION

1. The Radio frequency working range 2402-2480MHz, the max output power 8dBm
2. The distance between user and products should be no less than 20 cm. There is no restriction to use this product across the EU countries.
3. Hereby, We TouchGrid Pty Ltd, declares that this device is in compliance with the essential requirements and other relevant provisions of Directive 2014/53/EU. and provide the declaration Web link: <https://touchgrid.com/product>.